

# File Transfer Method 1

## mSD Card

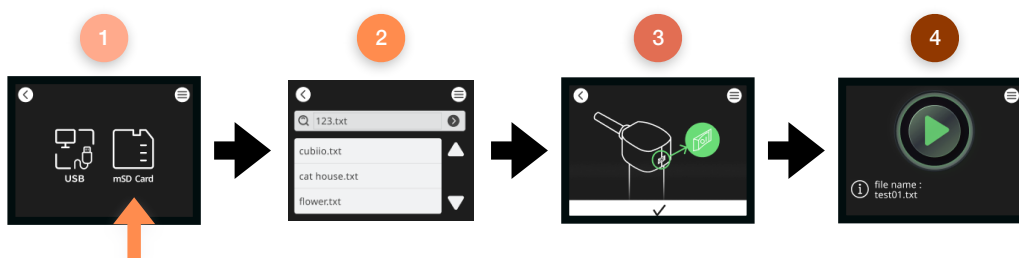


1. Please ensure that the file is `.txt` or `.gcode` format.
2. Save the processing file to the provided mSD card and insert it into the slot at the back of Cubiio X before turning the machine on.
3. Select the G-code file you wish to process.

▲ If a red frame appears, it indicates that the machine did not read the specified file.

1. 請確認檔案為.txt 或.gcode
2. 將加工檔案存入隨機所附mSD卡，並在CubiioX開機前插入機器後方插槽
3. 選擇欲加工的Gcode檔案

▲ 若出現紅色方框，表示機器未讀到您指定的檔案



## File Transfer Method 2

1. Please check that the TypeB end is inserted into the machine's rear connector.
2. Connect the USB end to your computer.
3. Download the chip driver:  
Download link: <https://www.silabs.com/developers/usb-to-uart-bridge-vcp-drivers?tab=downloads>
4. Launch the LaserWeb application: \_\_\_\_\_  
Download link: <https://github.com/LaserWeb/LaserWeb4-Binaries/releases>
5. On the left menu, go to 'Comms.'
6. For 'MACHINE CONNECTION,' select 'USB.'
7. For 'USB/SEPIAL PORT,' choose the appropriate USB port (each device has a different name).
8. Set the Baudrate to **115200**.
9. Click 'Connect' > In the lower right corner of the window, '**Machine connected... Firmware marlin RE\_NA detected**' will be displayed.
10. On the left menu, go to 'Files.'
11. Select the .gcode file you want to process.
12. To operate the machine, choose 'USB mode,' click the checkmark icon (✓), and then click the **▶ green button** on the machine screen.
13. In the left menu, go to 'Control,' and click the orange 'run' button
14. Start processing.



### USB Mode

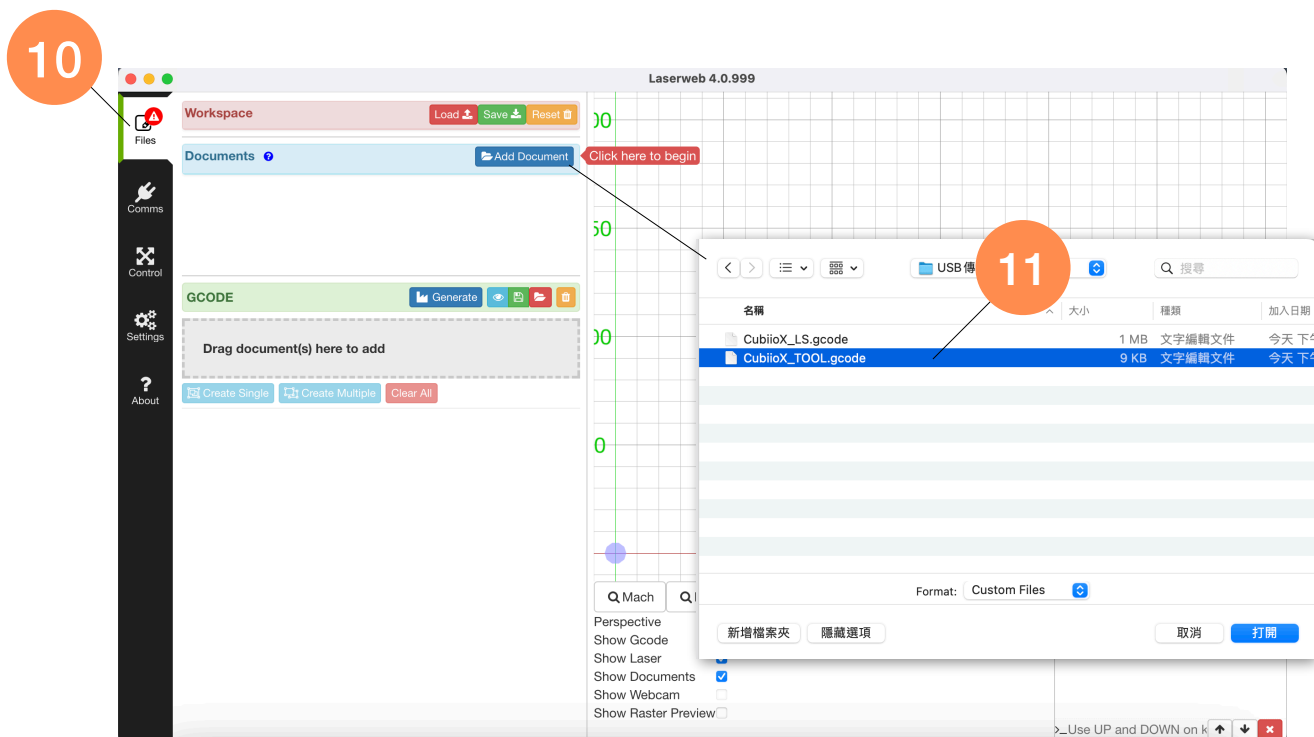
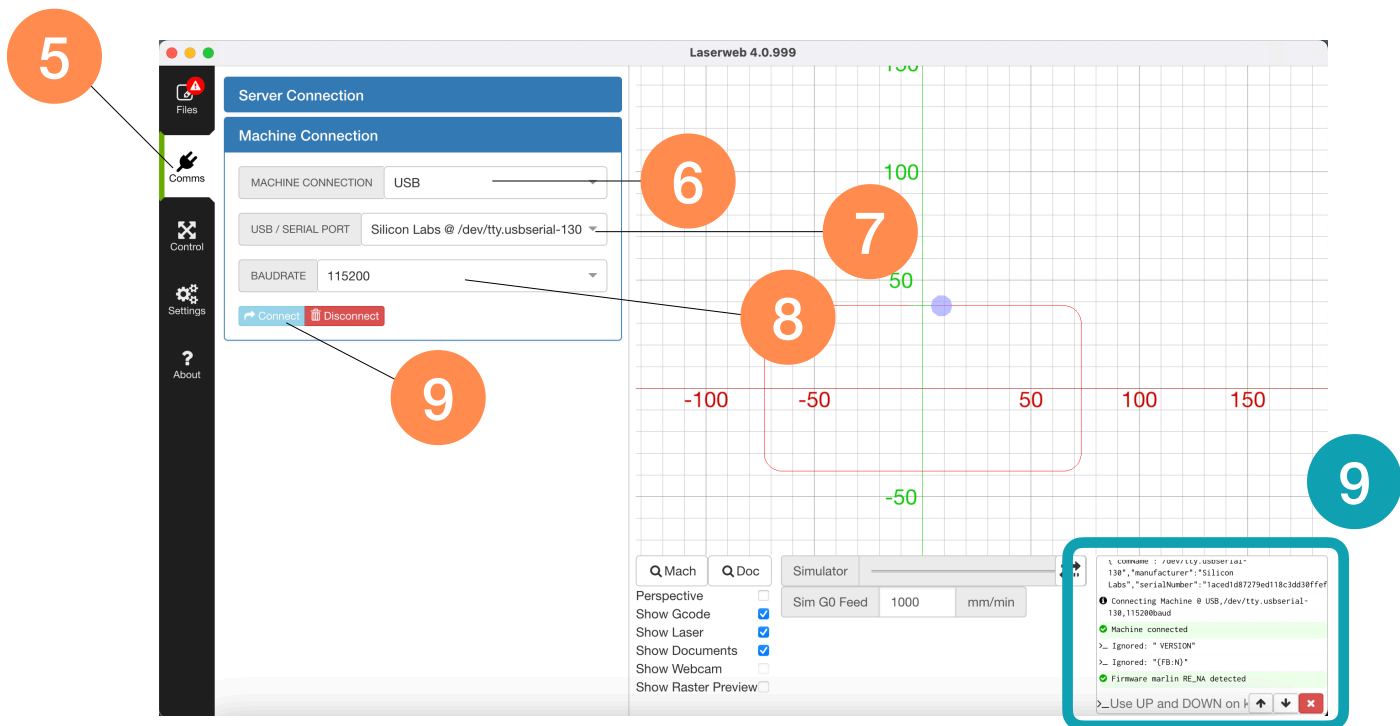


▲ In USB transfer mode, you can also control the X-Y coordinates of Cubiio X using the Control interface in LaserWeb.

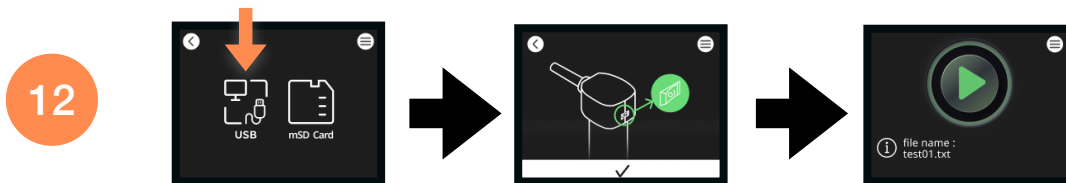
1. 請檢查TypeB端已插入機器後方連接口
2. USB端接到電腦上
3. 下載晶片驅動程式  
下載 <https://www.silabs.com/developers/usb-to-uart-bridge-vcp-drivers?tab=downloads>
4. 啟動LaserWeb應用程式  
下載 <https://github.com/LaserWeb/LaserWeb4-Binaries/releases>
5. 左方選單進入Comms
6. MACHINE CONNECTION 選擇 : USB
7. USB/SEPIAL PORT 選擇 : 該USB連接埠 ( 每台裝置名稱不同 )
8. Baudrate選擇 : 115200
9. 點選Connect > 視窗右下角會顯示**Machine connected...Firmware marlin RE\_NA detected**
10. 左方選單進入Files
11. 選擇欲加工的.gcode檔案
12. 操作機器選擇USB mode > 按下確認✓ > 點選機器螢幕中的▶綠色按鈕
13. 左方選單進入Control > 按下橘色run按鈕
14. 開始加工

▲ 使用USB傳輸模式也可透過LaserWeb的Control介面操控Cubiio X的X-Y座標位置等

# File Transfer Method 2



# File Transfer Method 2



**13**

Controller

Laserweb 4.0.999

Not Connected Queued: 0

X: 9.71 mm

Y: 38.10 mm

F: 100 %

S: 100 %

home all run job abort job set zero check size

Laser Test

Y+ 1mm

Y- 1mm

X- 1mm X+ 1mm

jog by jog by jog by jog by

XY Jog

Z Jog 300 mm/min

LIVE JOGGING **DISABLED**

Goto XY zero LASER OFF

Q Mach Q Doc Simulator

Perspective Show Gcode Show Laser Show Documents Show Webcam Show Raster Preview

Machine connected

> Ignored: "VERSION"

> Ignored: "(F:N)"

Firmware marlin RE\_M detected

Warning: Gcode out of machine bounds, can lead to running work halt

Running Job

Aborting job

>\_Use UP and DOWN on k